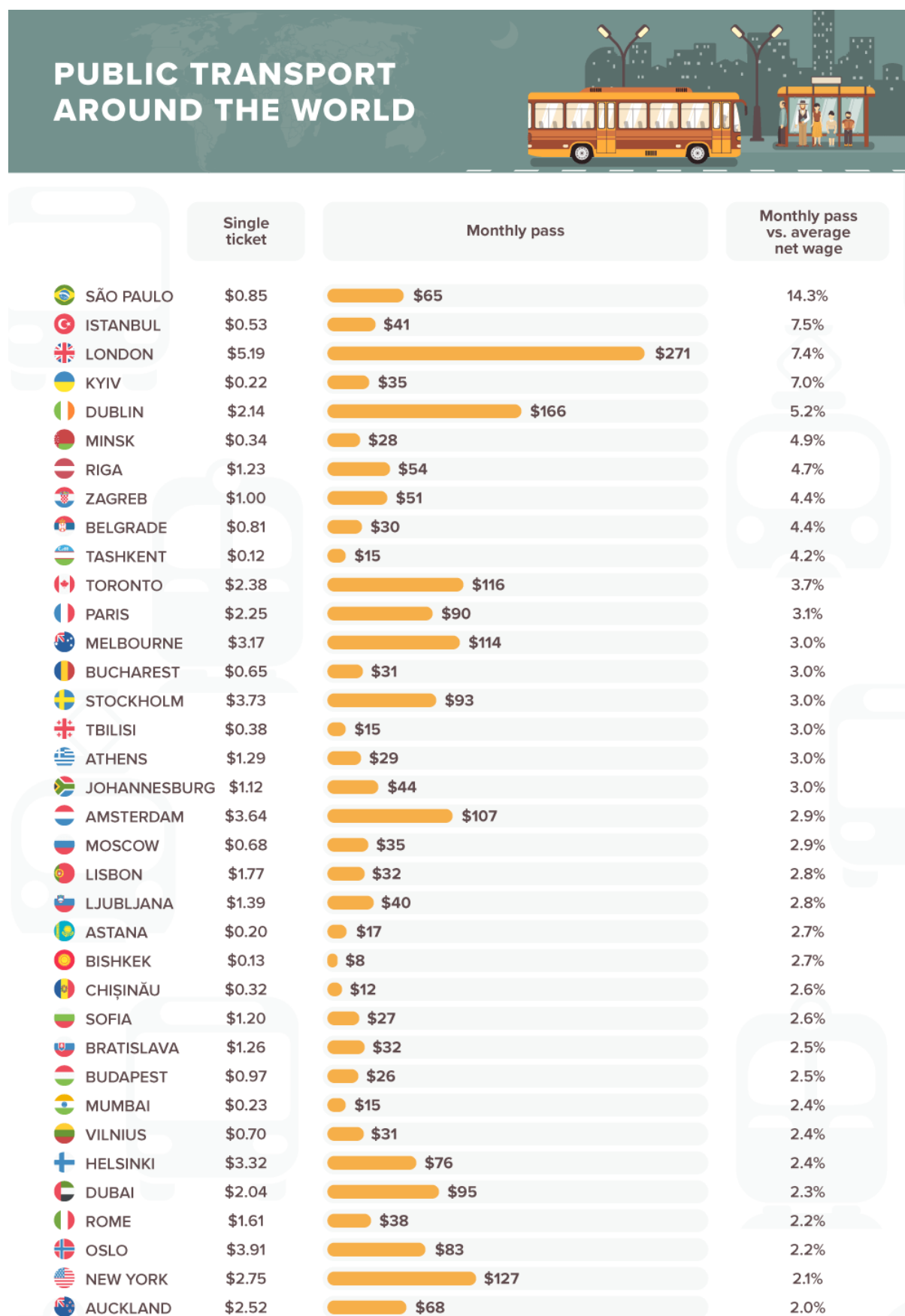
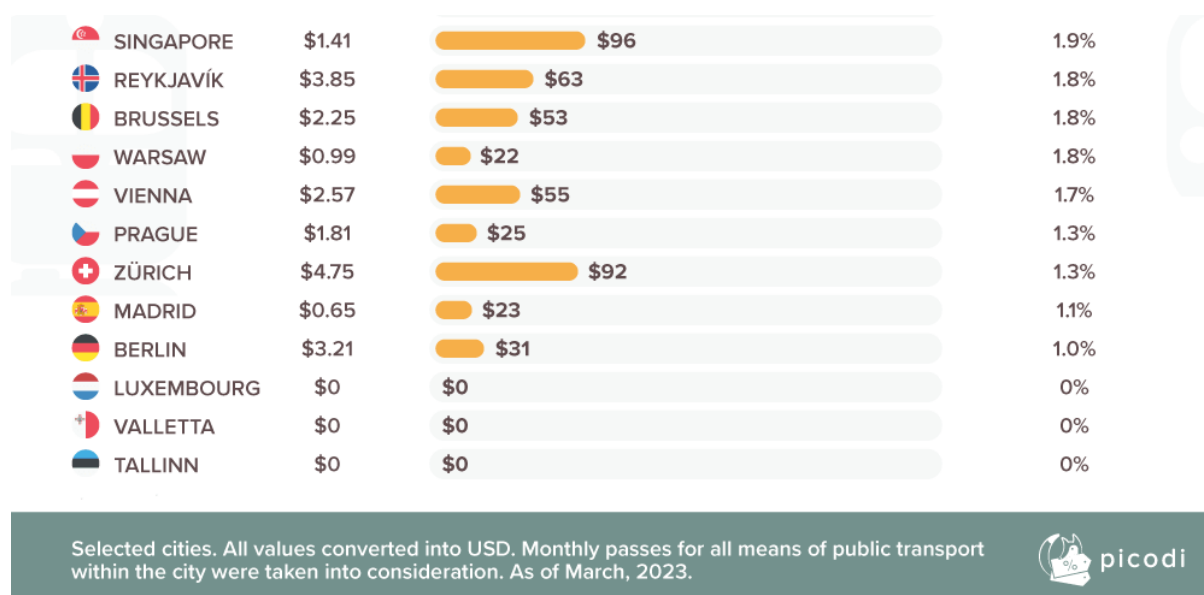


[Picodi.com](https://picodi.com) analysts checked the public transport fares in 48 cities worldwide and juxtaposed the transport expenses with local average wages.

In our study, we took a closer look at single ticket prices, as well as monthly passes, which allow for unlimited travel within the city limits.





In three out of 48 cities, public transport is completely free for citizens—Luxembourg, the capital of Estonia, Tallinn and the capital of Malta, Valletta.

**Among other cities in our ranking, the most expensive single tickets can be found in London (\$5.19), Zurich (\$4.75) and Oslo (\$3.91). On the other hand, the highest prices for monthly passes are paid by citizens of London (\$271), Dublin (\$166), and New York (\$127).** For comparison, in Tashkent and Tbilisi, a monthly pass costs \$15. In Bishkek such pass costs \$8.

When we juxtapose the monthly pass prices with the average monthly wages, **the least favourable ratio can be found in São Paulo, where the monthly access to all means of public transport in the city costs 14.3% of the average wage.** Second and third place in terms of cost is shared by London and Istanbul (7.4% of the average wage each).

In this ranking, **Tashkent ranks 10<sup>th</sup>**: a monthly pass for all types of public transport is worth UZS 166,000 and is equal to 4.2% of the salary (after taxes). In **Tbilisi**, this ratio is 3% (16<sup>th</sup> place and GEL 40), and in **Bishkek**—2.7% (24<sup>th</sup> place and KGS 680).

## Methodology

Our study was based on the prices of single tickets and monthly passes offered by local public transport operators as of March 2023. Average net wages were taken from numbeo.com. For currency conversion, we used the average exchange rate data from Google Finance for February 2023.

The monthly passes included in this study allow for unlimited travel with all means of transportation within the city limits. In our ranking, we used the most favourable prices if possible (e.g. lower fares with a mobile app or special public transport cards, although we did not include the cost of ordering such a card).

We did not include cities, in which one mode of transport is offered by multiple operators with very different pricing policies (Tokyo, Beijing, Jakarta, Bangkok and others). We also did not include cities where it is not possible to buy a monthly pass.

The full list of the included cities and public transport operators can be found [here](#).

## Public Use

Both the infographics as well as the statistical data can be used freely for commercial and non-commercial purposes. We only ask you to credit the author of the research ([Picodi.com](https://picodi.com)) with a link to this subpage. In case of any questions, please feel free to contact us at: [research@picodi.com](mailto:research@picodi.com).